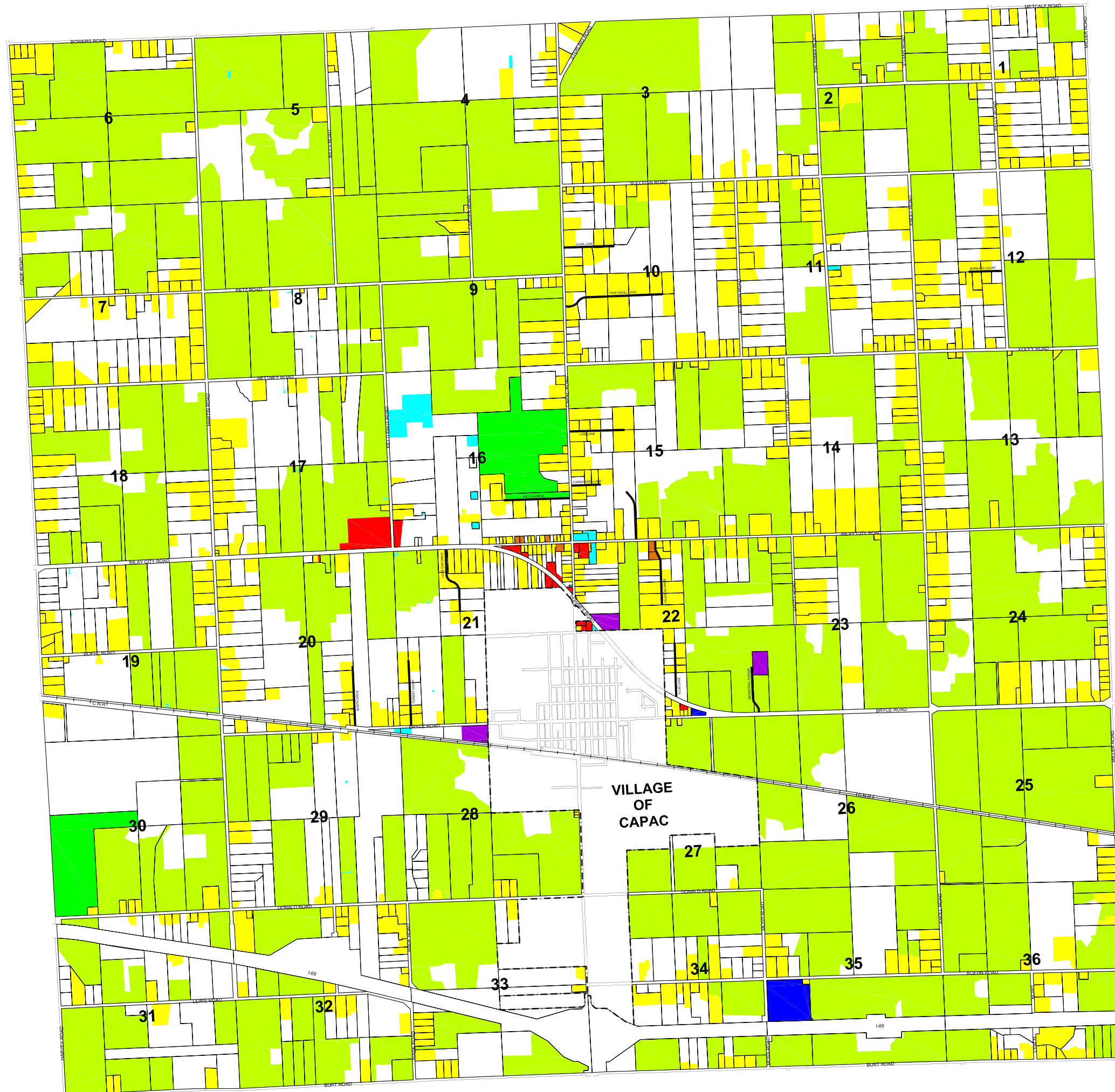





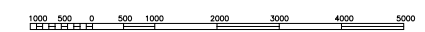
# MUSSEY TOWNSHIP

## EXISTING LAND USE

2010



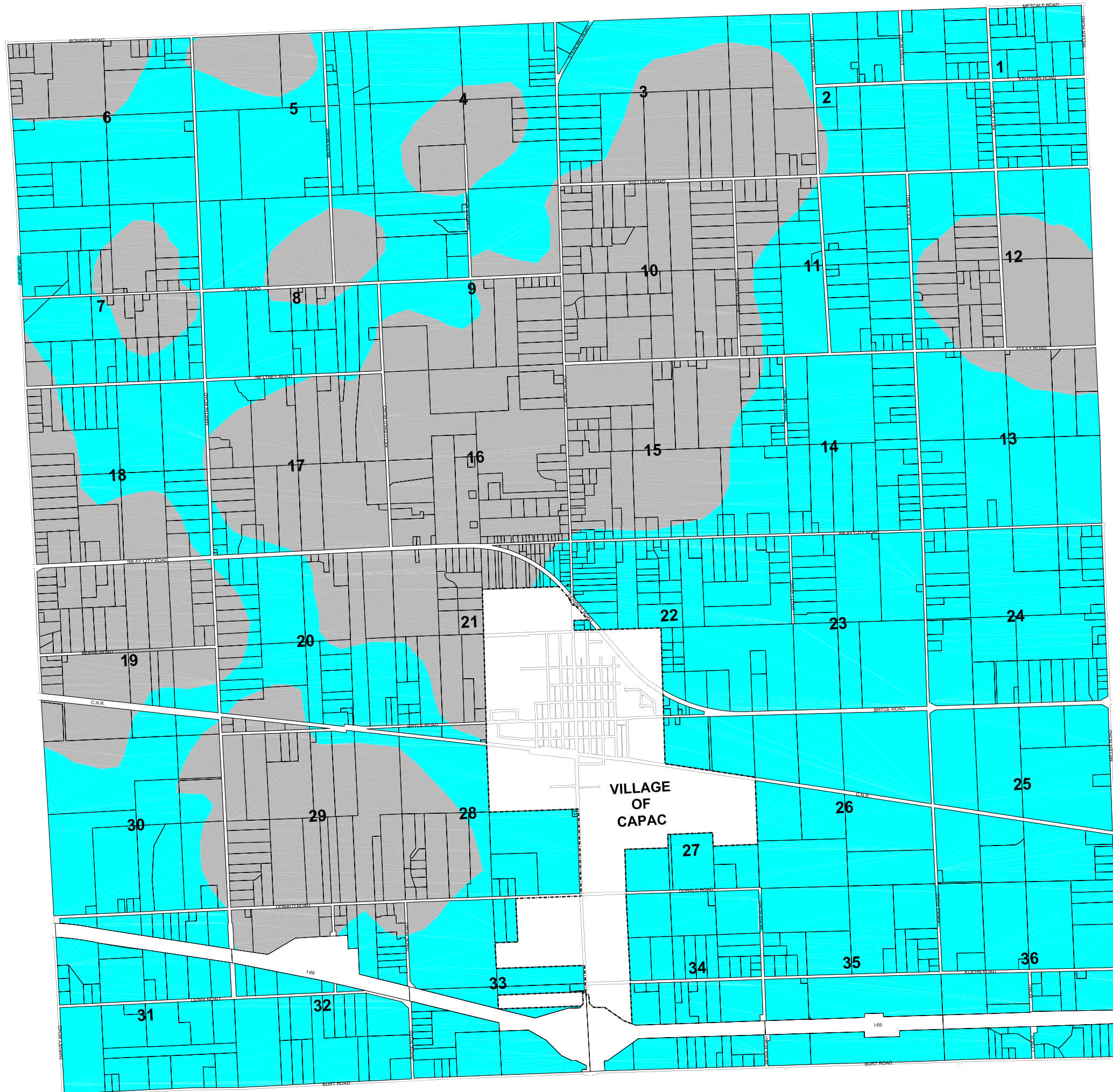
-  Agriculture
-  Single-Family Residential
-  Two-Family Residential
-  Commercial
-  Public, Quasi-Public, Institutional
-  Light Industrial
-  Heavy Industrial
-  Recreation
-  Vacant





# MUSSEY TOWNSHIP

## BEDROCK GEOLOGY

(1987 - MDEQ Data)



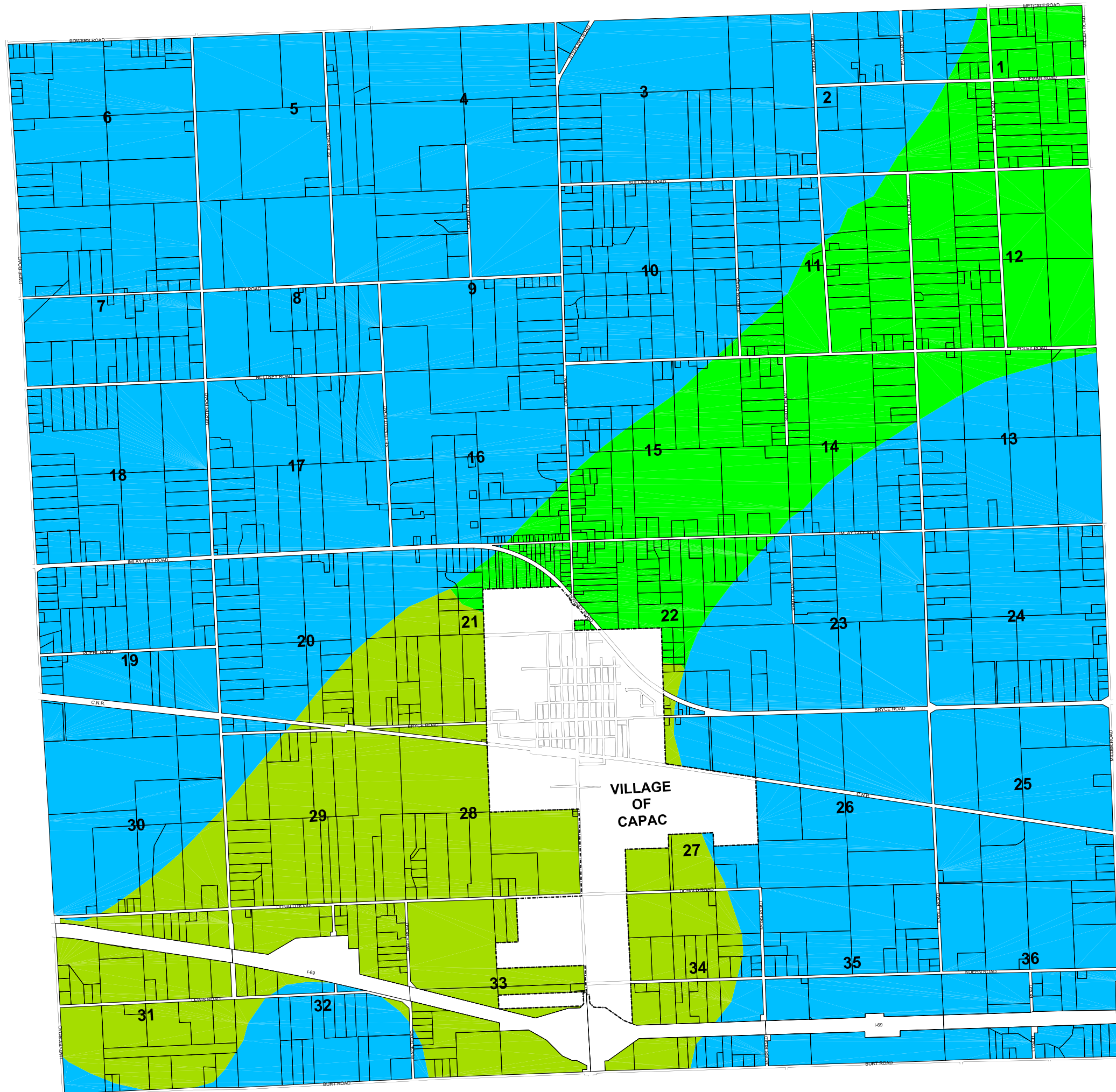
-  Coldwater Shale
-  Marshall Formation



# MUSSEY TOWNSHIP

## QUATERNARY GEOLOGY

(1987 - MDEQ Data)



-  End Moraines of Coarse Textured Till
-  End Moraines of Fine Textured Till
-  Lacustrine Clay & Silt






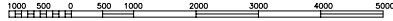
# MUSSEY TOWNSHIP

## SOIL LIMITATIONS FOR SEPTIC SYSTEMS

(USDA - NRCS Data)



-  Not Limited
-  Somewhat Limited
-  Very Limited



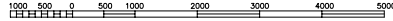
MUSSEY TOWNSHIP

WETLANDS MAP

(National Wetlands Inventory)



■ Mapped Wetlands



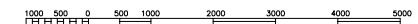
# MUSSEY TOWNSHIP

## 100-YEAR FLOODPLAIN MAP

(National Flood Insurance Program)



 100-Year Floodplain



**MONTGOMERY ASSOCIATES, INC.**  
3051 COMMERCE DRIVE, SUITE 2, FORT GRANT, MICHIGAN, 48039  
URBAN PLANNING CONSULTANTS  
810-385-3150 FAX, 810-385-3172

# MUSSEY TOWNSHIP WOODLANDS MAP

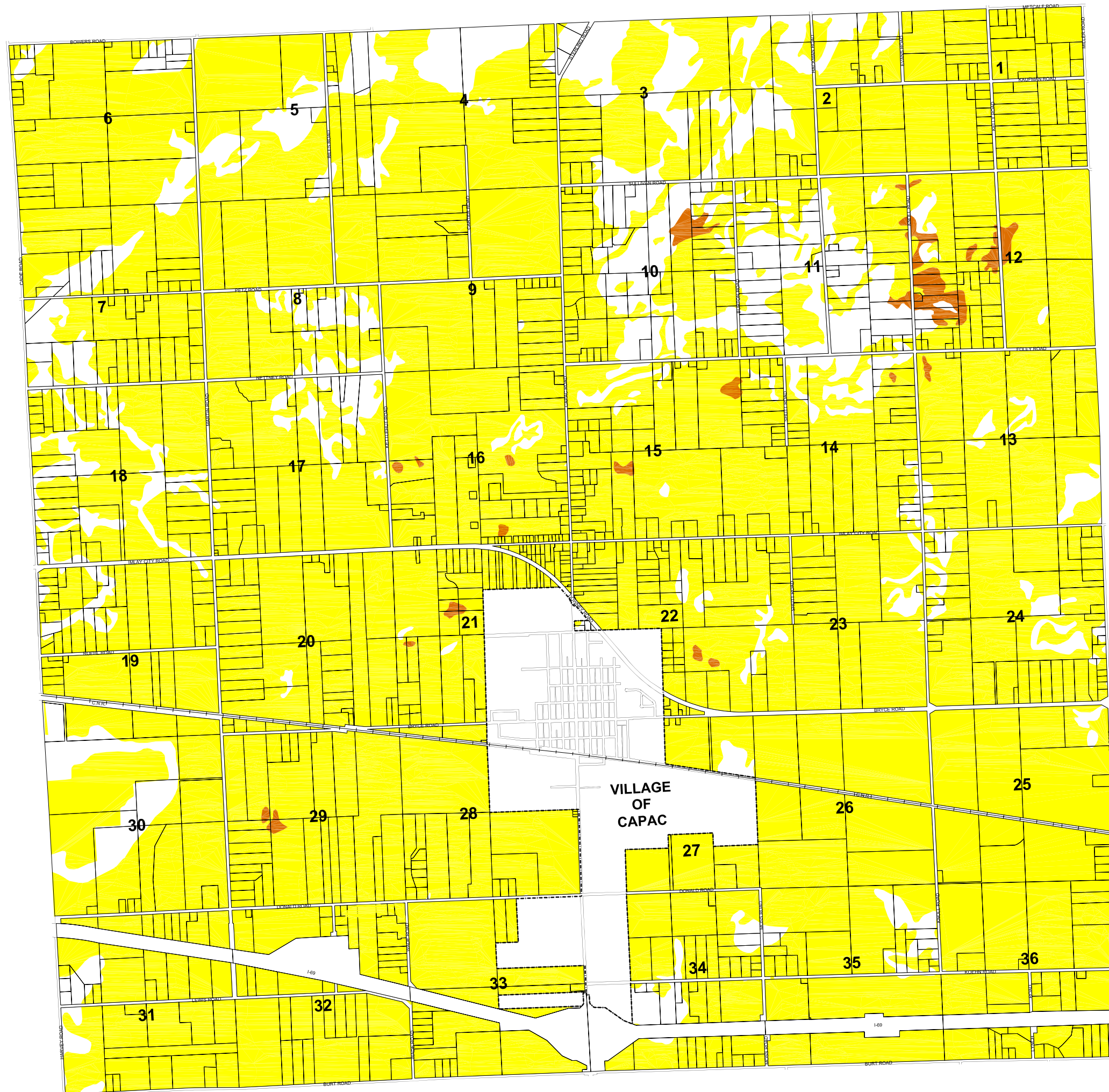


 Mapped Woodlands



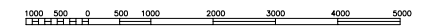
# MUSSEY TOWNSHIP PRIME FARMLANDS MAP

(USDA - NRCS Data)



-  Prime Farmlands
-  Prime Farmlands (if drained)

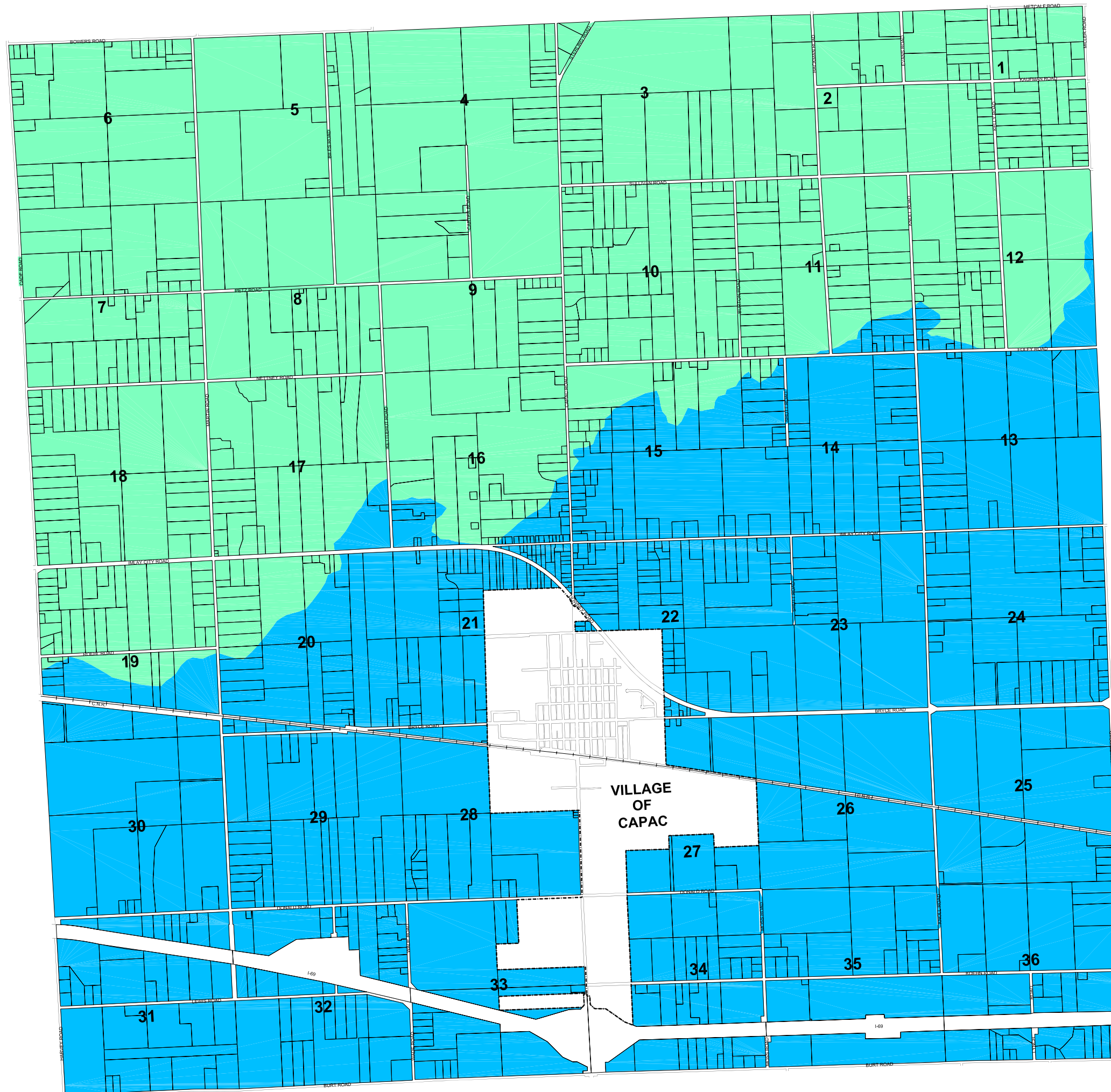
NOTE: THE USDA-Natural Resources Conservation Service categorizes land as "Prime Farmland" based on soil, topographic and drainage characteristics, *not* on parcel size.



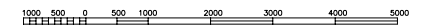


# MUSSEY TOWNSHIP

## WATERSHEDS



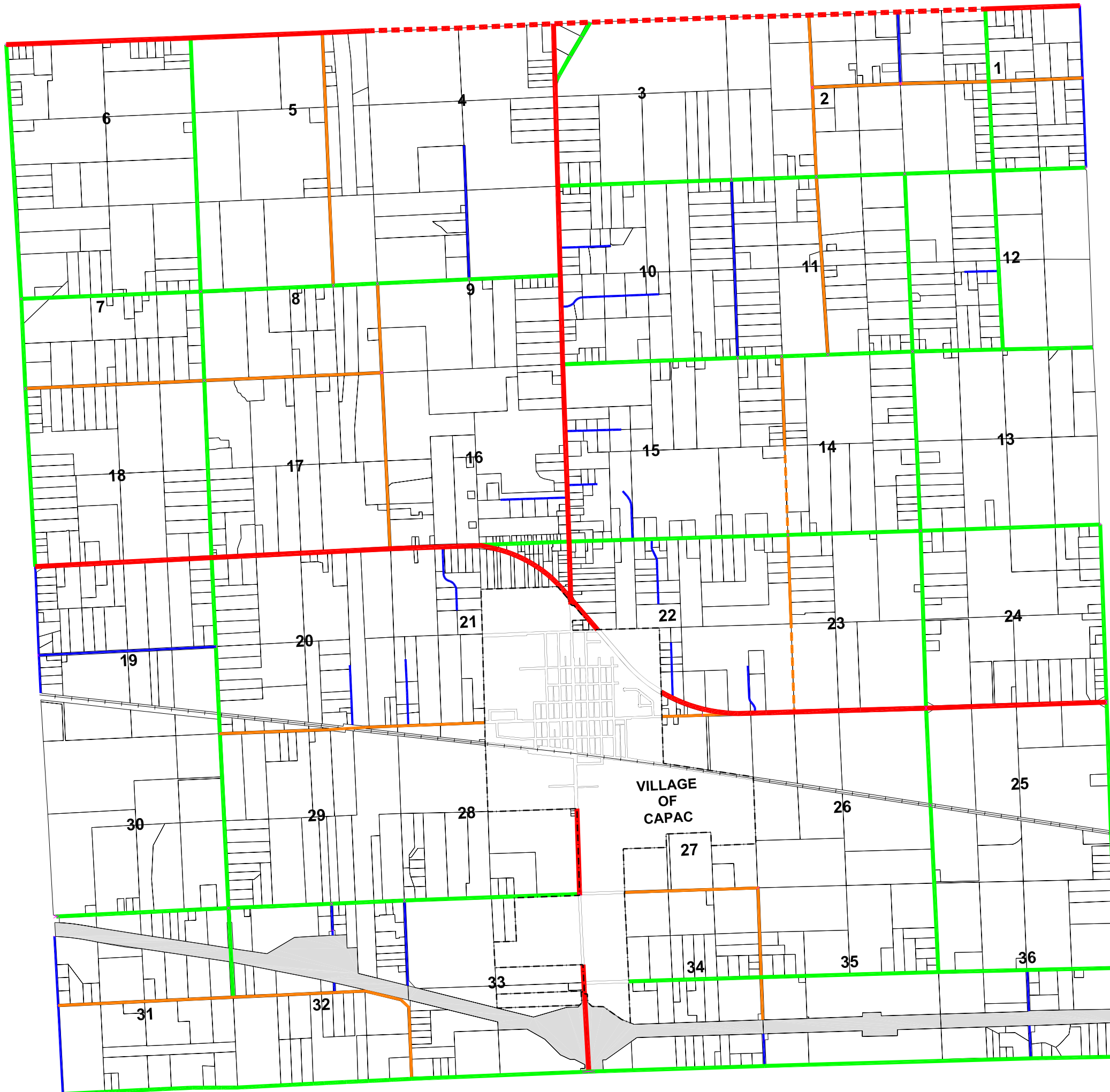
-  Belle River
-  Mill Creek









# MUSSEY TOWNSHIP

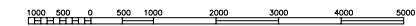
## THOROUGHFARE PLAN

DRAFT



-  Interstate Highway
-  Major (150' R-o-W)
-  Secondary (120' R-o-W)
-  Collector (86' R-o-W)
-  Local (66' R-o-W)
-  Proposed Major
-  Proposed Collector

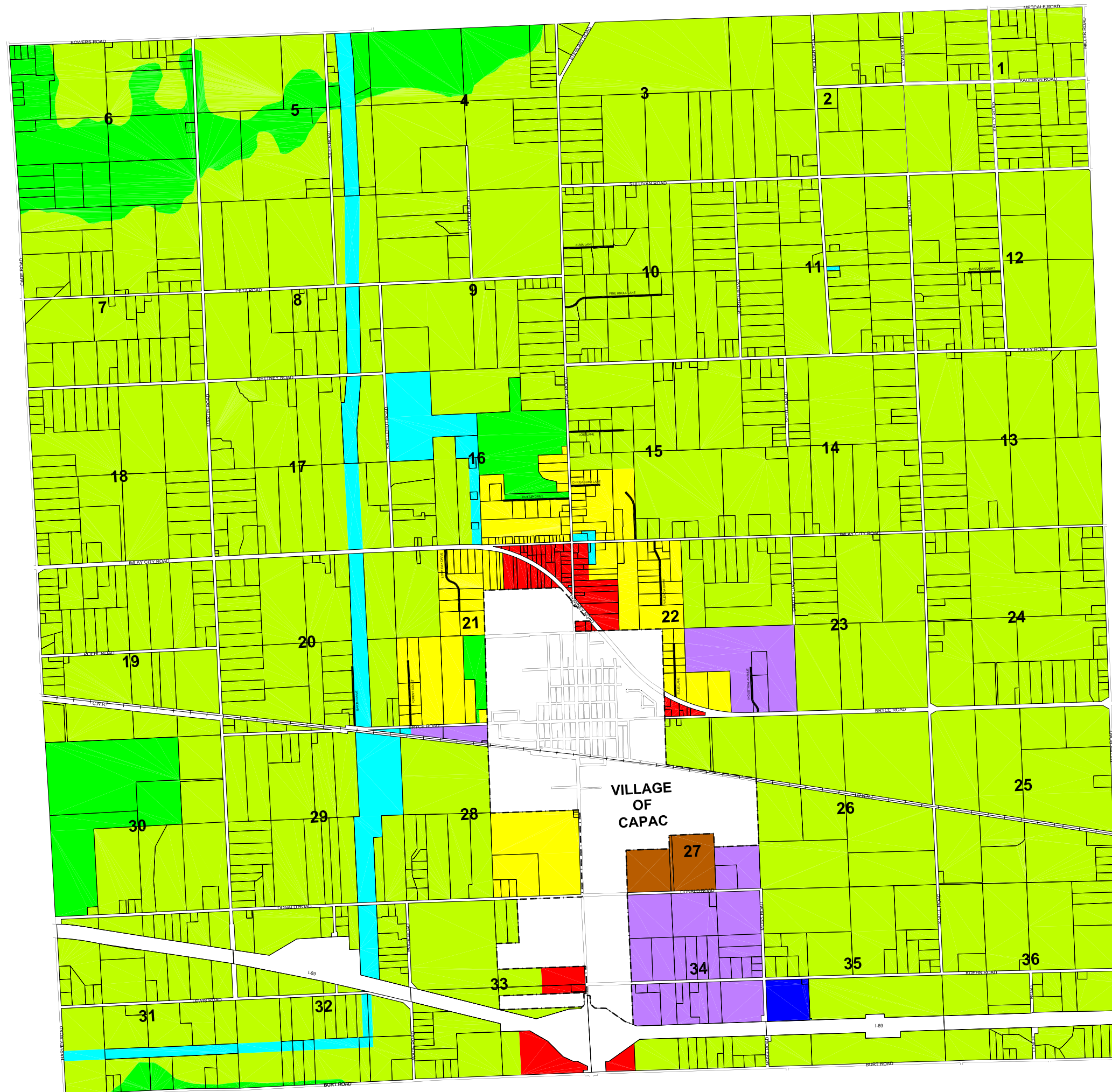
VILLAGE  
OF  
CAPAC



# MUSSEY TOWNSHIP

## LAND USE PLAN

DRAFT



-  Agricultural & Rural Residential
-  Single-Family Residential
-  Multiple-Family Residential
-  Commercial
-  Public, Quasi-Public, Institutional
-  Light Industrial
-  Heavy Industrial
-  Recreation, Conservation, Open Space

